

Supercluster.



Korea Smart City

Supercluster

MOLIT (Ministry of Land, Infrastructure and Transport Korea) and KAIA (Korea Agency for Infrastructure Technology Advancement) have established a New Korea Smart City Supercluster to coordinate international standardization for smart cities. The Korea Smart City Supercluster is a research & development group, cross-domain collaboration organization created to make open standard interoperable smart city. We bring together government agencies, institutes, academia, and communities to create some of international standards for smart city interoperable reference architecture. Through a cross-domain collaborative combination of smart planning, smart environment, smart mobility, smart energy, smart building, smart technology, we have built open standard innovation ecosystem for smart city.

MORE INFO

Korea Agency for Infrastructure Technology Advancement
Jina Park, Program Director
<http://thinkaboutit.kr/>
jinapark@thinkaboutit.kr, jinapark@kaia.re.kr

EXPLORE



We are Korea's Smart City Supercluster, Interoperability Designers

Korea Agency for Infrastructure Technology Advancement
Jina Park, Program Director, <http://thinkaboutit.kr/supercluster/about-2.html>
jinapark@thinkaboutit.kr, jinapark@kaia.re.kr





An orchestration approach
to smart city ecosystems is
the research of
interoperation of smart city,
and the business
ecosystems, innovation
networks, and resource
complementarities of
design.





The Korea Smart City Supercluster is a research & development group, cross-domain collaboration organization created to make open standard interoperable smart city.

International Standardisat



Korea Smart City Supercluster

The Korea Smart City Supercluster are bodies that specialize in the development of open standard interoperable smart city as a horizontal integration knowledge through a powerful combination of multidisciplinary & interdisciplinary research, collaborative R&D, standard patent creation and smart service development we create interoperable and shareable rules that will improve the overall integration of legacy, increase the synergies between the different silos and solve society's biggest challenges.

The Korea Smart City Supercluster community network is made up 100+ organizations from across Korea. We are Korea Institute of Civil Engineering and Building Technology (KICT), ITS Korea, Korea Smart Energy Association (KoSEA), Korea Electronics Technology Institute (KETI), Telecommunications Technology Association (TTA) and HANCOM NFLUX CO., LTD. – connecting across the city, mobility, platform, infrastructure, ICT, building, energy, safety and industry sectors.

MORE INFO

Challenges

What **We Do**

International Standardization for Smart City Interoperable Reference Architecture



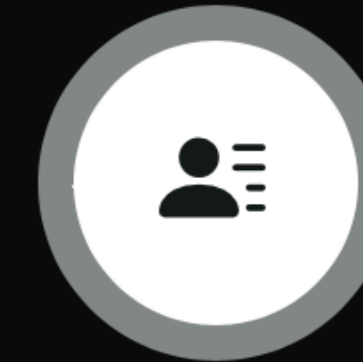
Smart City Strategic Framework

Smart cities rely on integrated and interconnected strategies and systems to effectively provide better services and increase quality of life, ensuring equal opportunities to all and protecting the environment (ISO). We have developed the Smart City Strategic Framework to create a reference framework for the development to Smart Korea.



Technical & Semantic interoperability

Recommendation ITU-T Y.4200 defines the requirements for the interoperability of a smart city platform (SCP) and its reference points in order to ensure the correct functioning of city services. By permitting interoperability with other platforms the SCP will also encourage local economic development through innovation and competition.



Shaping Co-creation & Collaboration in Smart Cities

Smart cities are collaborative communities that bring government, academic, private sectors, and citizens together. We foster strong connections across our diverse stakeholders, breaking down silos and unlocking the shared value of smart city data. We also celebrate our rich diversity and ensure everyone can participate and belong.



A systemic standardisation approach is a smart cities and communities philosophy that may or may not include a guide for specific domains. Some are to guide the overall goal of the smart city information framework. Our approaches are to guide the horizontal interoperability of the various sector designers.

Korea Agency for Infrastructure
Technology Advancement,
Jina Park, Program Director,
[http://thinkaboutit.kr/
supercluster/index.html](http://thinkaboutit.kr/supercluster/index.html) ,
jinapark@thinkaboutit.kr,
jinapark@kaia.re.kr



01

Systemic

The Korea Smart City Supercluster is a research & development group, cross-domain collaboration organization created to make open standard interoperable smart city.



02

Standardisation

We bring together government agencies, institutes, academia, and communities to create some of international standards for smart city interoperable reference architecture.



03

Approach

Through a cross-domain collaborative combination of smart planning, smart environment, smart mobility, smart energy, smart building, smart technology, we have built open standard innovation ecosystem for smart city.





Our Team



Korea Agency for Infrastructure Technology Advancement

JINA PARK, PROGRAM DIRECTOR



Korea Institute of Civil Engineering and Building Technology

SEONGSIG KIM, RESEARCH SPECIALIST



ITS Korea

SUSIE KIM, EXECUTIVE DIRECTOR

Korea Agency for Infrastructure
Technology Advancement,
Jina Park, Program Director,
[http://thinkaboutit.kr/
supercluster/index.html](http://thinkaboutit.kr/supercluster/index.html) ,
jinapark@thinkaboutit.kr,
jinapark@kaia.re.kr



Korea Smart Energy Association (KOSEA)

WONGOO DO, TEAM LEADER



Korea Electronics Technology Institute

SEUNGMYEONG JEONG, SENIOR RESEARCHER



Telecommunication Technology Association (TTA)

TAEYOUNG CHOI, PRINCIPAL RESEARCHER





ts Proj Projects I

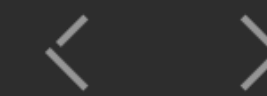
Open Standard Interoperable Smart City, International Standardization for Smart City Interoperable Reference Architecture, Smart City Strategic Framework, Smart Mobility - eMaaS – Electric Mobility as a Service, Smart Energy Building, Smart Energy for a Smart City, Geospatial data for smart city applications, Spatial Data Infrastructure for Smart City, Citizen-centric, Smart and Sustainable Cities, Smart City Data Hub, Smart City Competences, Smart Skills for Smart Cities, Smart City Data Hub Certification Program, Global Joint Program, Global Smart City Management





Open Standard Interoperable Smart City

/ KAIA - kaia.re.kr



01 / 08

Open Standard

Interoperable Smart





Smart cities and smart governance models for open & agile cities

/ KICT - kict.re.kr



02 / 08

Strategic Framework



Smart Standards





Electric Mobility as a Service (eMaaS)

/ ITS-K - itskorea.kr



Smart Mobility

Electri





Geospatial data for smart city planning and management

/ TTA - tta.or.kr



05 / 08

Geospatial Data

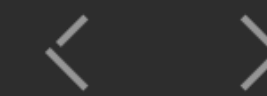
Smart
Sustain
Cities





City Data Platform with NGSI-LD

/ KETI - keti.re.kr/citydatahub.kr



06 / 08

City Data Hub

Data-d
Manag





Comprehensive Methodology for Assessing ICT & Data in Smart City Projects

Smart Skills of the Future

/ TTA - tta.or.kr



07 / 08

Capacity Building



Quality Assess





Global Smart City Joint Program

/ TTA - tta.or.kr



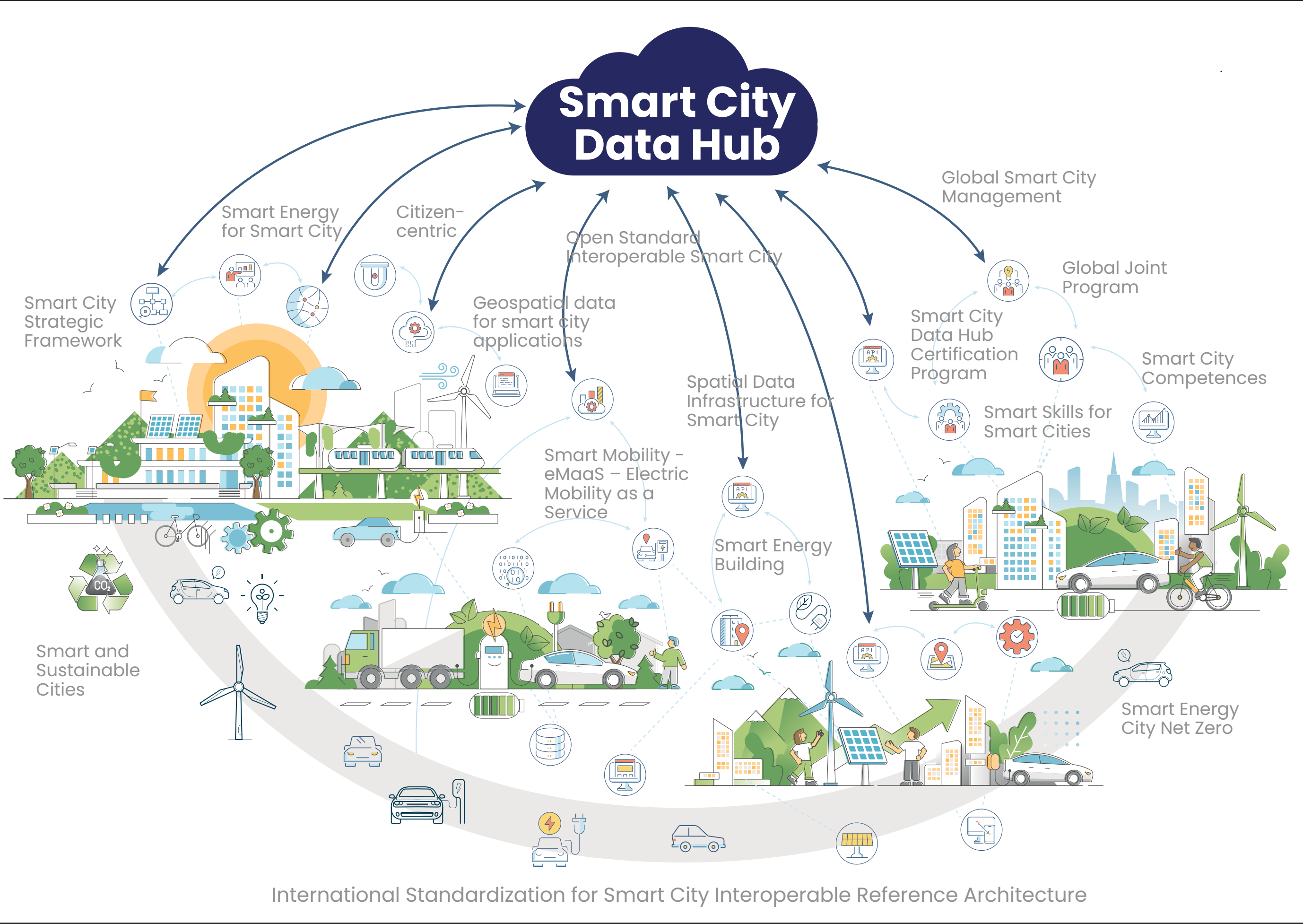
08 / 08

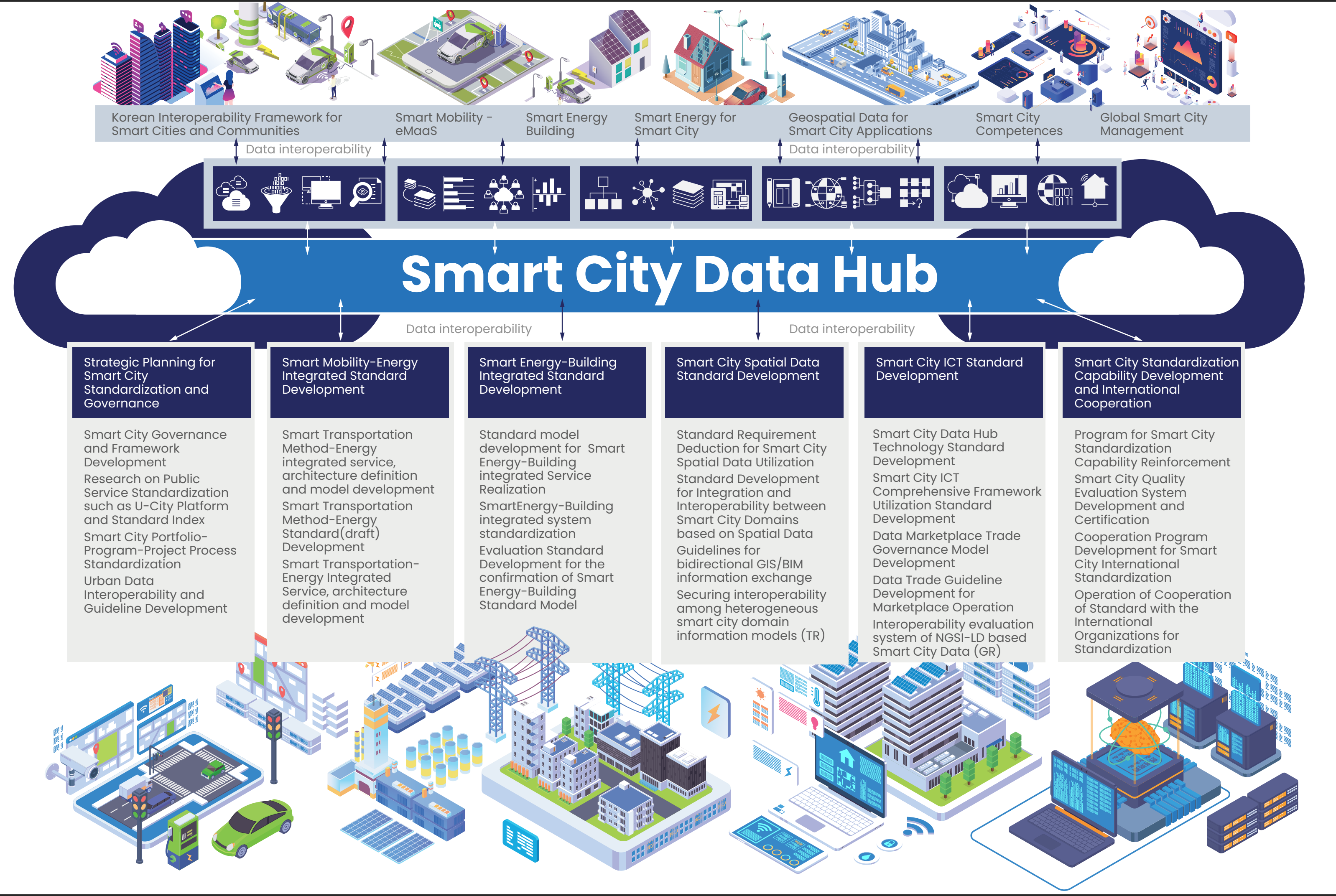
Joint Programme

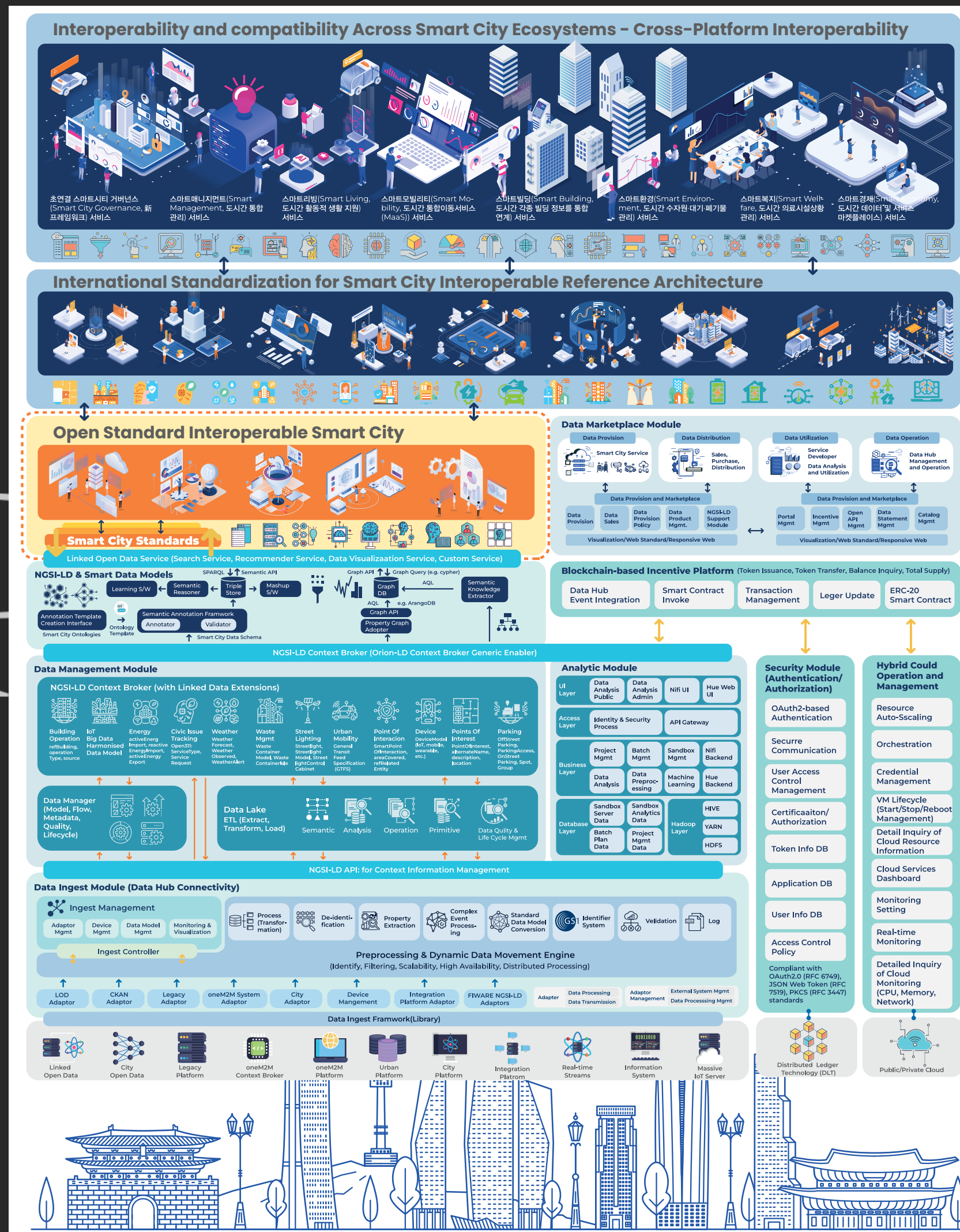


Smart Network









Supercluster.

Korea Smart City

Supercluster

MOLIT (Ministry of Land, Infrastructure and Transport Korea) and KAIA (Korea Agency for Infrastructure Technology Advancement) have established a New Korea Smart City Supercluster to coordinate international standardization for smart cities. The Korea Smart City Supercluster is a research & development group, cross-domain collaboration organization created to make open standard interoperable smart city. We bring together government agencies, institutes, academia, and communities to create some of international standards for smart city interoperable reference architecture. Through a cross-domain collaborative combination of smart planning, smart environment, smart mobility, smart energy, smart building, smart technology, we have built open standard innovation ecosystem for smart city.

MORE INFO

Korea Agency for Infrastructure Technology Advancement
Jina Park, Program Director
<http://thinkaboutit.kr/>
jinapark@thinkaboutit.kr, jinapark@kaia.re.kr

EXPLORE